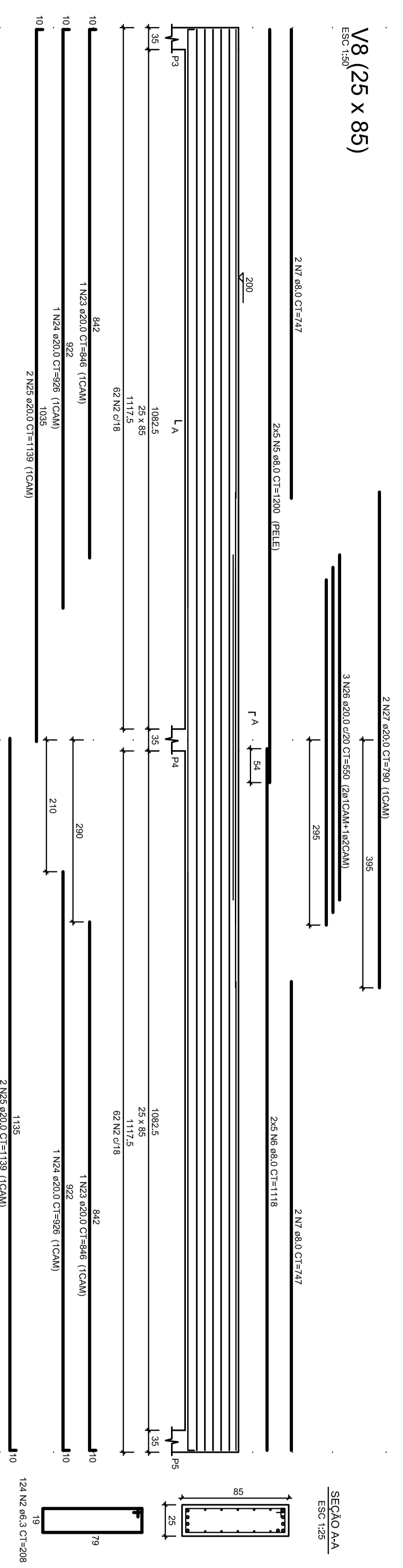
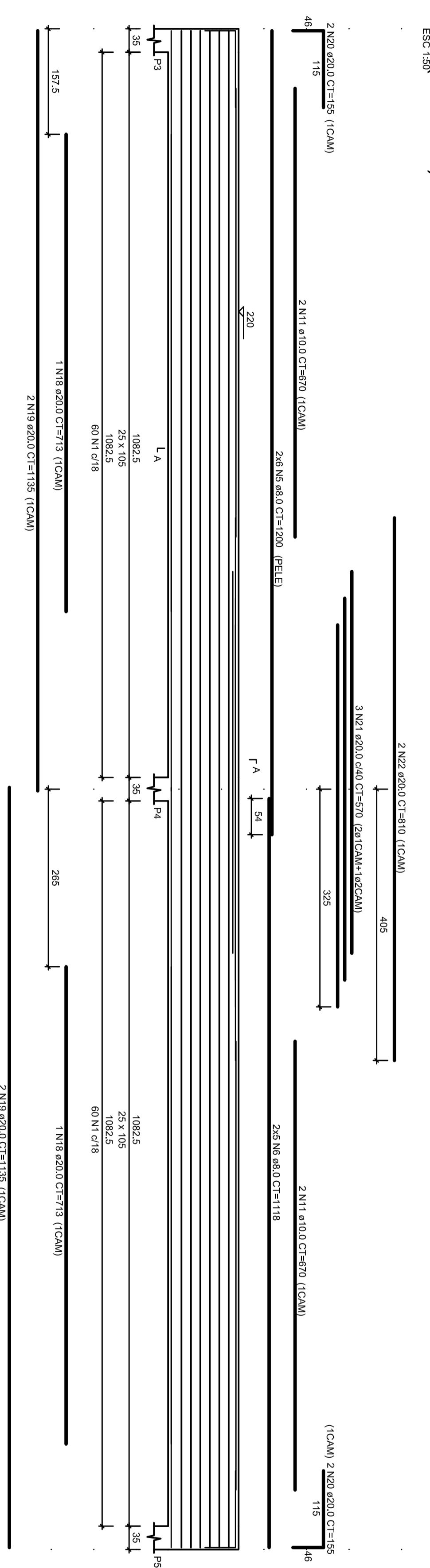


V8 (25 x 85)



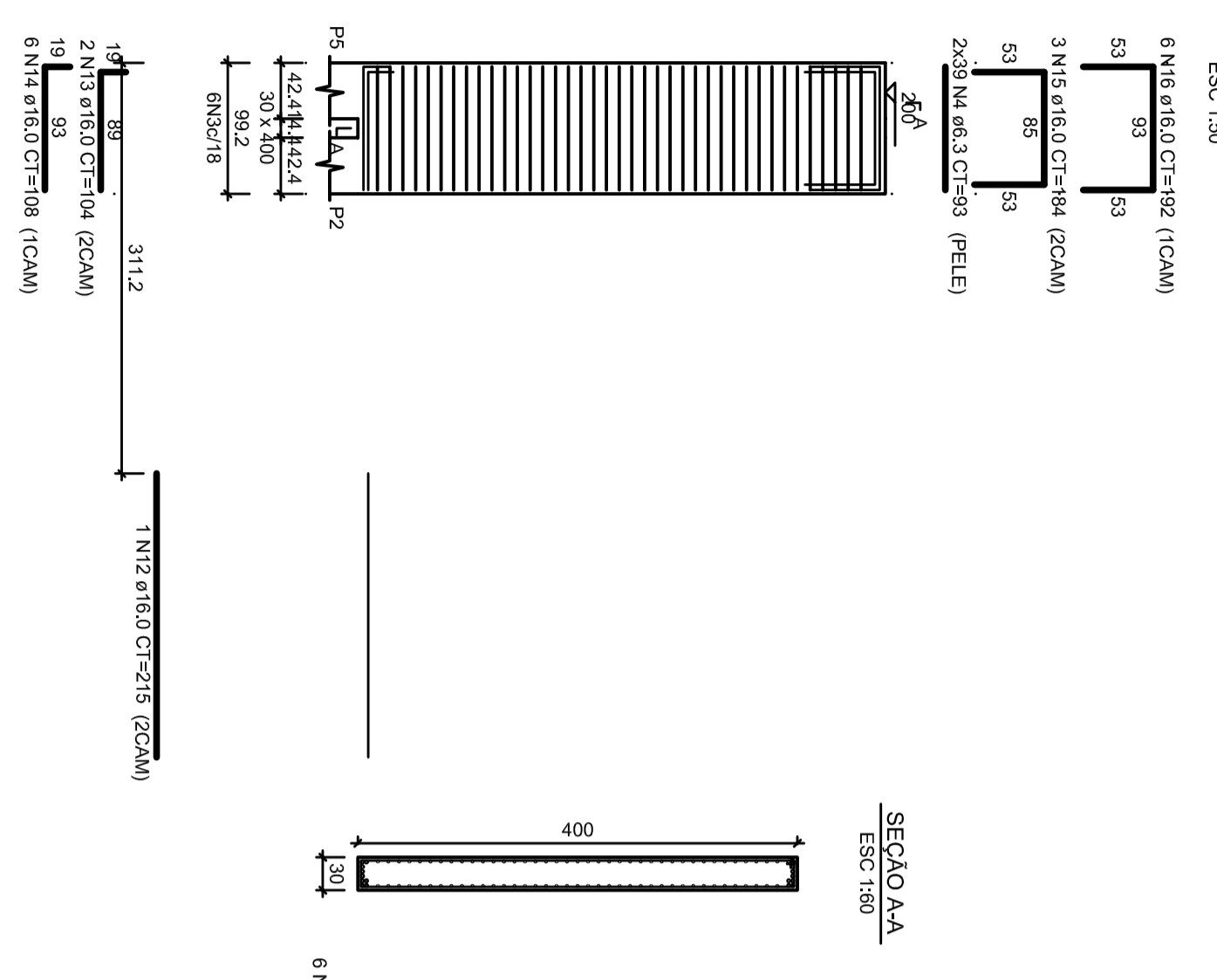
SEÇÃO A/A
ESC: 1/25

V9 (25 x 105)

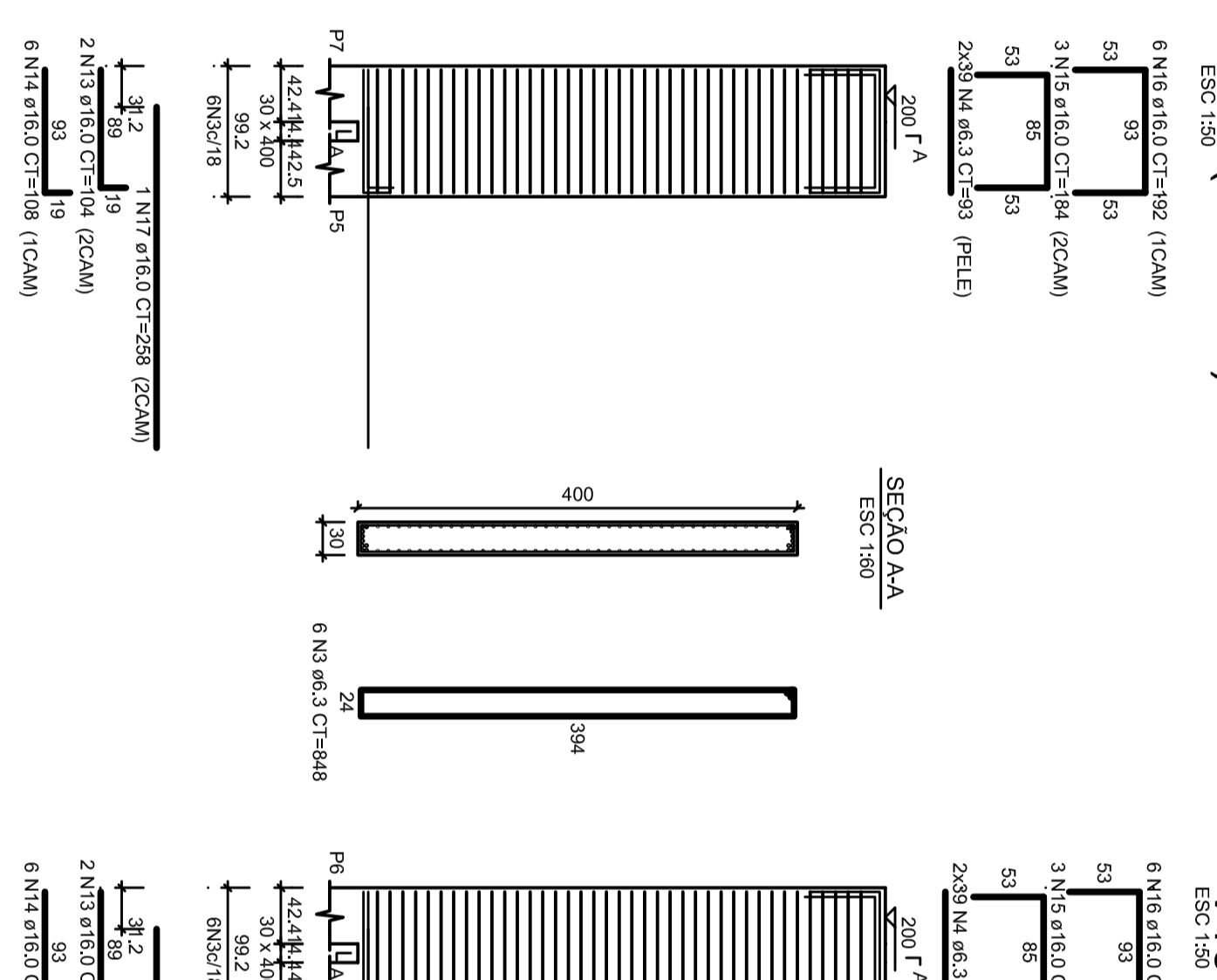


SEÇÃO A/A
ESC: 1/25

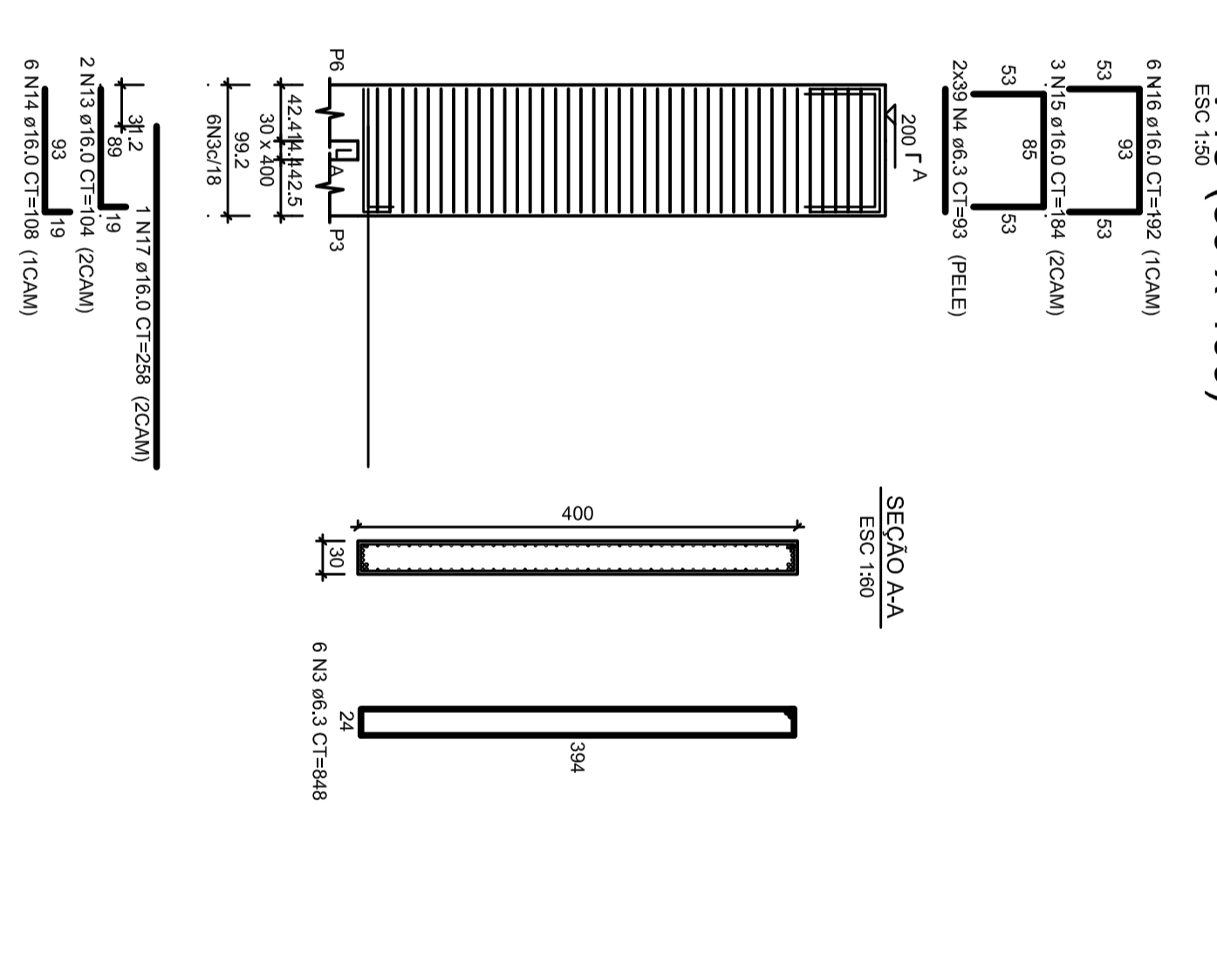
V11 (30 x 400)



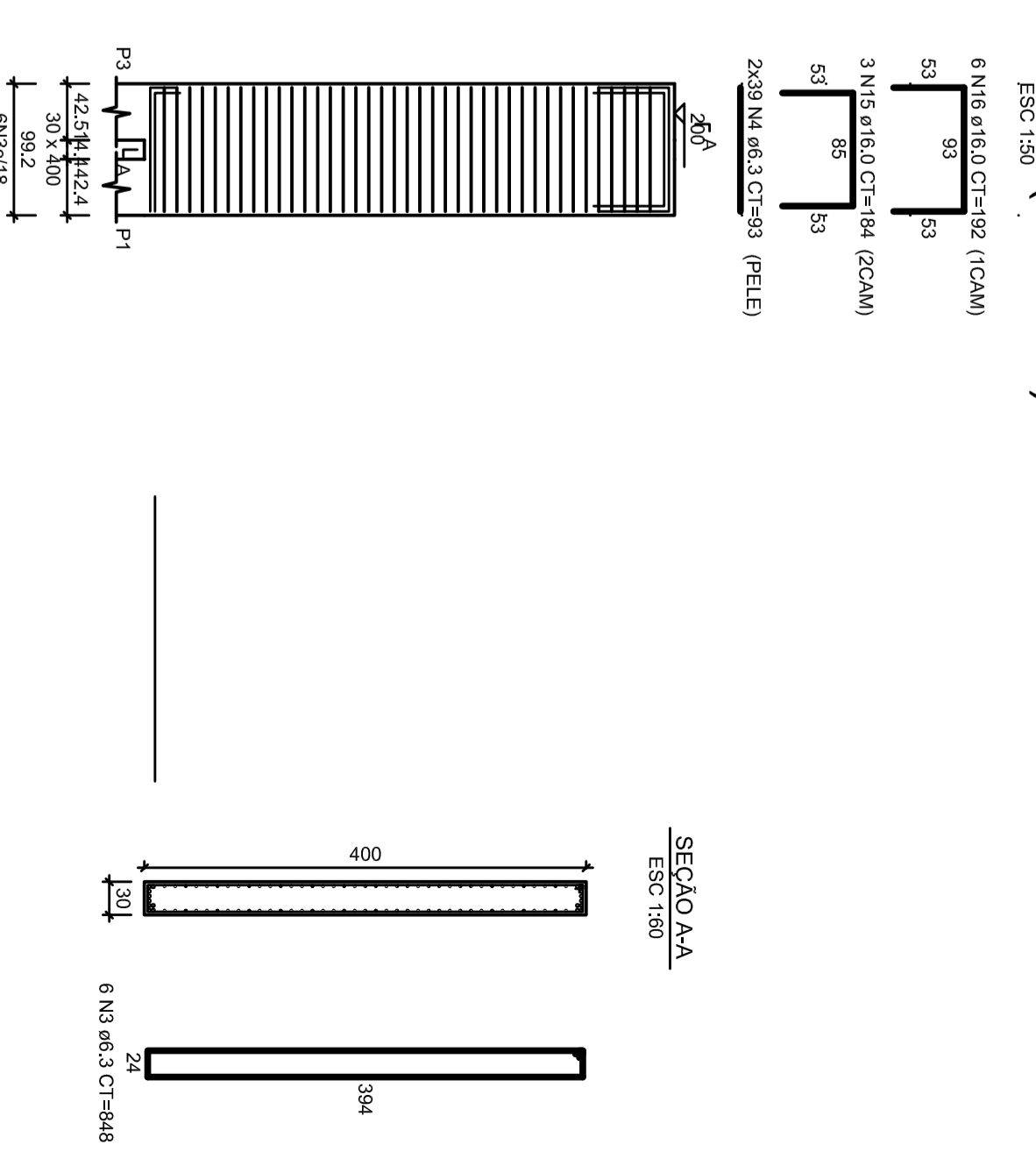
V12 (30 x 400)



V13 (30 x 400)



V10 (30 x 400)



SEÇÃO A/A
ESC: 1/30

PROJETO DE PONTE
DETALHAMENTO VIGAS SUPERESTRUTURA

GILMAR LUIZ SOUTHER
PROFESSOR MUNICIPAL

Engº CIVIL KADAN JOSE GRIEBELER
CRA 164.765/2008

ENGENHEIRO DA OBRA
ARNOVO TRAVESSERO
L.A.T. = 29° 17'36,36" S, LONG. = 49° 02'39,88" O
CENTRO, TRAVESSERO - RS
eengenh@travessero.com.br
TEL (61) 3940 1123

ESCALA	ÁREA	DATA	LARGURA	EXTENSÃO	12
1:100	283,75 m ²	08/2024	12,90 M	22,70 M	