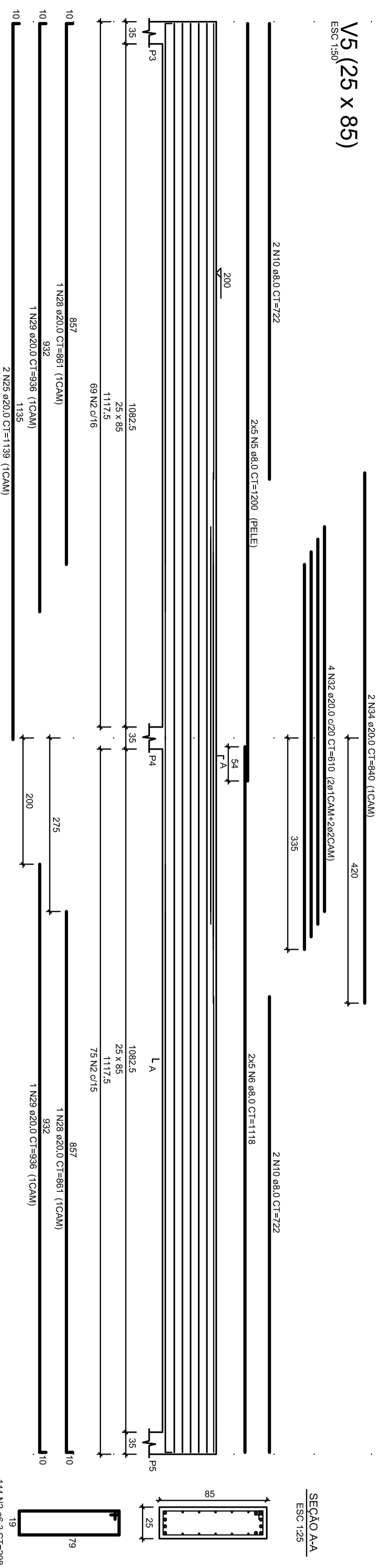
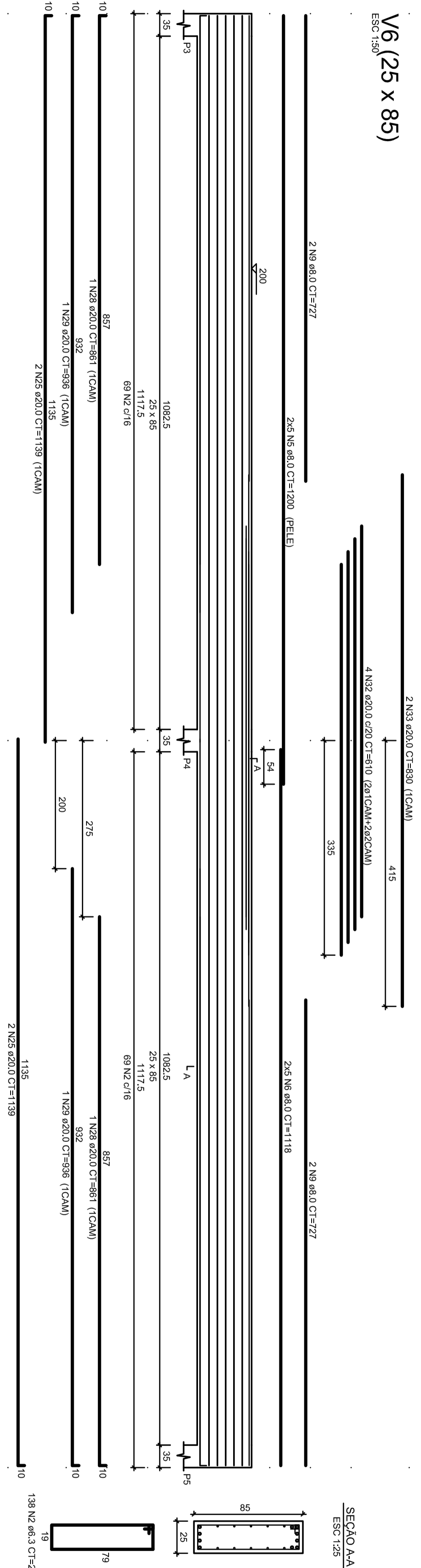


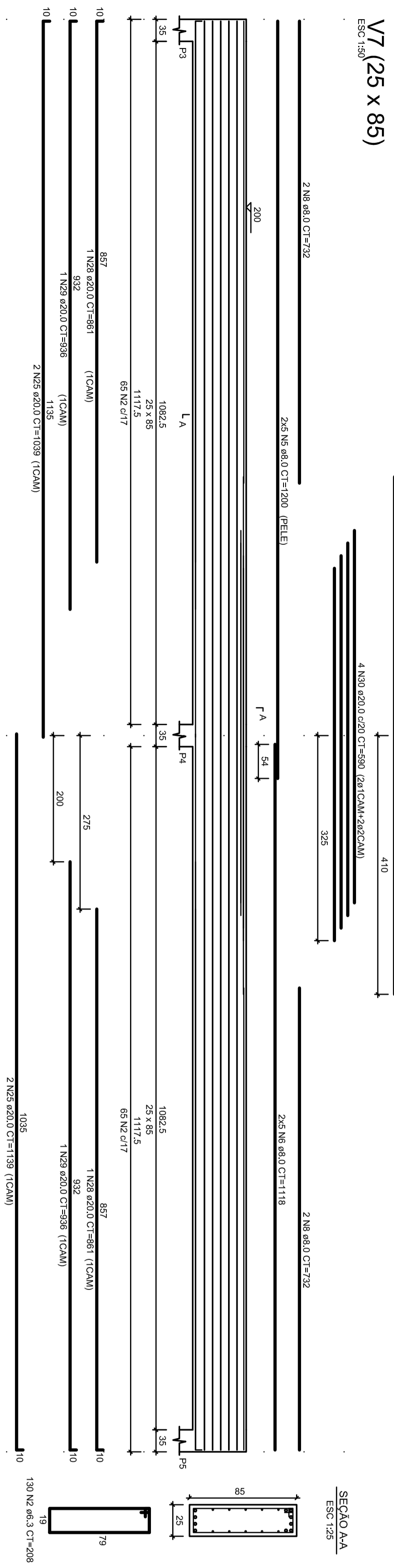
V5 (25 x 85)



V6 (25 x 85)



V7 (25 x 85)



PROJETO DE PONTE DETALHAMENTO VIGAS SUPERESTRUTURA

GILMAR LUIZ SOUTHER
PROJETO MUNICIPAL

Engº CÍVIL KADAN JOSE GRIEBELER
CRS 134.795.969

ENFERMEIRO DA OBRA
ARRIODO TRAVESSEIRO
L.A.T. = 29° 17'36,35" S. LONG. = 52° 03'39,89" O
CENTRO, TRAVESSEIRO - RS
TA (61) 3940 1123
engenhml@travesseiro.rs.gov.br

ESCALA	ÁREA	DATA	LARGURA	EXTENSÃO	11
1:100	293,79 m ²	08/2024	12,90 M	22,70 M	