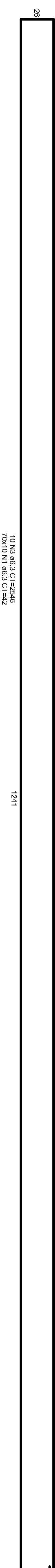
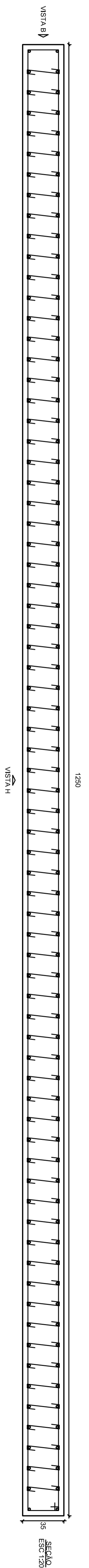
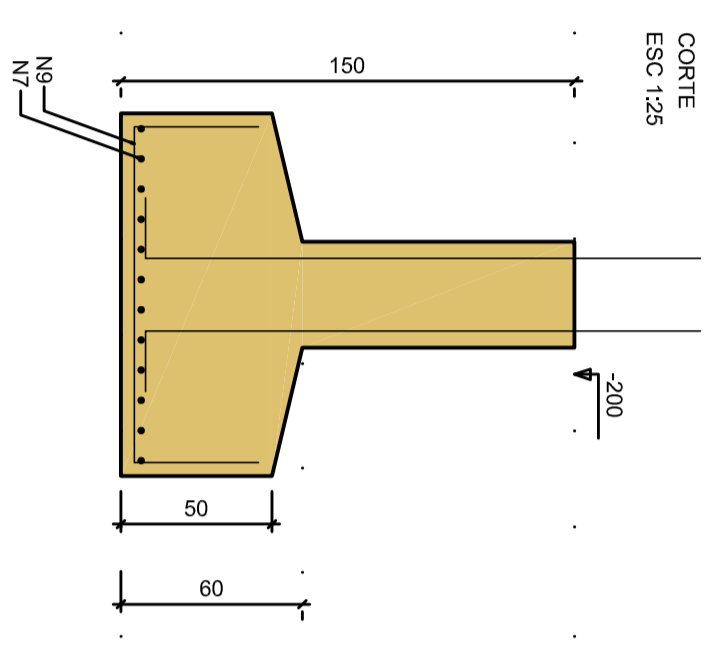
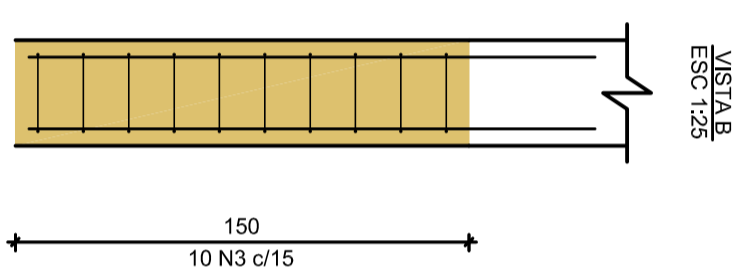
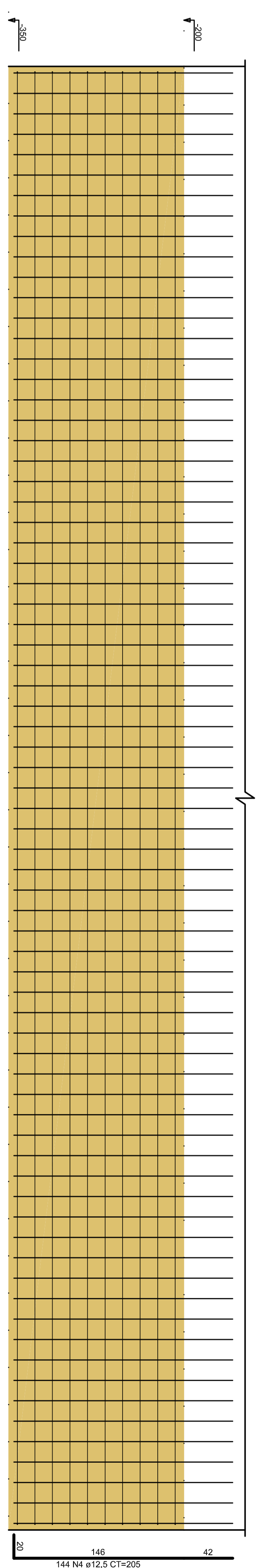


Solo com capacidade de suporte > 3.00 kg/cm²
Solo compactado sobre a subleito
para espessura > 150/300 mm



P3=FP3

FUNDAÇÃO - L1



4XP1 2XP3 P4
4XS1 2XS3 S4

RELAÇÃO DO AÇO

AÇO	N	DIAM (mm)	QUANT	C.UNIT (cm)	C.TOTAL (cm)
CA50	1	6.3	3180	42	133560
	2	6.3	40	1046	41840
	3	6.3	30	2546	76380
	4	12.5	664	205	136120
	5	12.5	168	187	31416
	6	12.5	48	617	29616
	7	12.5	24	1367	32808
	8	12.5	12	1462	17544
	9	16.0	118	166	21948
	10	16.0	63	246	15498

RESUMO DO AÇO

AÇO	DIAM (mm)	C.TOTAL (m)	QUANT + 10% (Barras)	PESO + 10% (kg)
CA50	6.3	2517.8	231	677.7
	12.5	247.5	227	2622.7
	16.0	374.5	35	650.1
PESO TOTAL (kg)				
CA50		3950.6		

Volume de concreto (C-30) = 64.25 m³
Área de forma = 178.86 m²

PROJETO DE PONTE
DETALHAMENTO DAS SAPATAS

GILMAR LUIZ SOUTHER
PROJETO MUNICIPAL

Engº CIVIL KADAN JOSE GRIEBELER
CRM Nº 19286

ENGENHEIRO GERAL

ARRIOJO TRAVESSERO
LAT: -29° 17'36.36" S, LONG: -52° 03'38.88" O
CENTRO, TRAVESSERO - RS

COMUNICADO
T4 (61) 3840 1123
engenhua@travesseiro.rs.gov.br

ESCALA: 1:100
ÁREA: 289,75 m²
DATA: 08/2024
LARGURA: 12,50 M
EXTENSÃO: 22,70 M

05